

The Smart Device that Can Conduct Health Screening Tests, Check for Face Coverings, and Perform Routine Surveillance.

Wally HSO is Here.

Businesses and schools have been forced to redefine what 'open' means. Open for business certainly does not look like it did in early 2020. Companies and educators are working feverishly to re-establish themselves while safeguarding the health of their employees, students and visitors. Robotic Assistance Devices (RAD) has an all-in-one solution to assist these facilities in opening their doors in a safe, non-touch, and secure manner.

RAD has developed a unique solution, built upon the popular Wally stationary security robot, now with additional AI-driven facial analytics, interactive screening assessments, and temperature sensors to create Wally HSO™ (Health Screening Option).

- Reduce the risk of building access by infected persons*
- Maintain a safe environment for employees, students and guests
- Safer and more efficient than employing human resources to screen temperatures
- Reduces stress and anxiety
- Reinforces to others that you are doing all you can



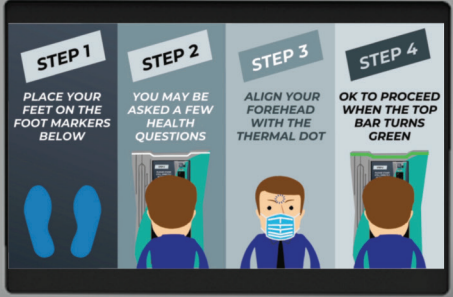
*Wally HSO does not determine the presence or absence of any infectious disease.



877-78-ROBOT

info@roboticassistancedevices.com
www.roboticassistancedevices.com

Wally HSO



- Cellular optimized, plus WiFi connectivity
- 2 digital cameras providing a full 180° field of view
- Infrared temperature sensor built-in
- RAD's exclusive Face Covering detection system available as part of RAD's Health Screening Option
- Complies with CDC, FDA and WHO health screening guidelines and recommendations
- Customizable informational display that can feature text, images, and video
- High visibility RGB LEDs
- Human detection analytics with SuspectSpotter™
- 24/7 equipment monitoring from RAD through the Remote Monitoring Center
- Close-range video intercom
- Long-range audio paging
- Credential validation and access control
- 22" touch tablet featuring security and concierge services, PLUS video conferencing with the SOC or guards in the field
- Security | Help | Panic button
- Over-the-air software updates
- Standard 110v power requirement
- Easy to mount on wall, connects and ready to perform in just minutes



WALLY



Powered by  Version: 12.3 (Live)

 **75°F** Fort Walton Beach
10:21 AM
Saturday, 24 October

SUN  82° 69°	MON  84° 69°	TUE  85° 73°	WED  83° 74°	THU  82° 69°
------------------------------------------------------------------------------------------------------	-------------------------------------------------------------------------------------------------------	-------------------------------------------------------------------------------------------------------	-------------------------------------------------------------------------------------------------------	-------------------------------------------------------------------------------------------------------

 CALL SECURITY	 LOCAL INFORMATION
 EMPLOYEE CHECK-IN	 EMERGENCY CONTACT INFO
 LOCAL RESTAURANT MENUS	 VISITOR CHECK-IN
 STATION INFORMATION	 MAINTENANCE

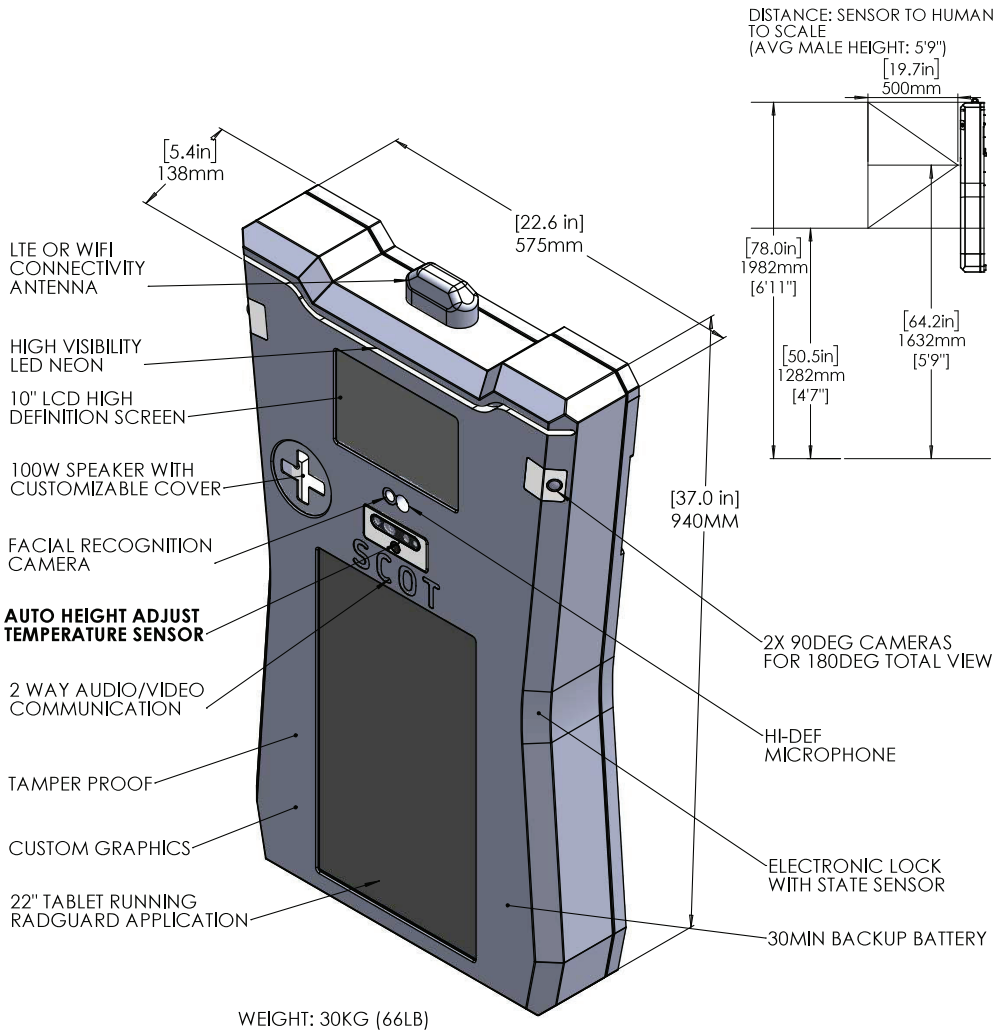


877-78-ROBOT

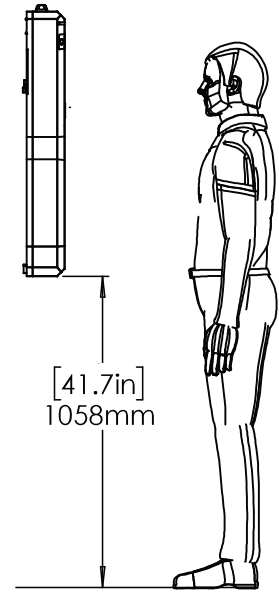
info@roboticassistedevices.com
www.roboticassistedevices.com

WALLY HSO

Technical Information



WALLY WITH HEALTH SCREENING OPTION	
<p><i>Wally + Infrared Temperature Sensor & Health Screening Workflow</i></p> <p>Allows end user to set a threshold of temperature of any visitors/employees wishing access to their facility.</p> <p>End user adjustable health questionnaire includes taking subject's temperature.</p> <p>High temperature or questionable answers can activate alert to secondary screening. Normal responses can unlock the door. Connect in real time via video call to a human with 1 button touch.</p>	
COMMUNICATION DETAILS	
<p>Standard - Cellular (no IT requirements)</p> <p>Fair or better AT&T signal required</p> <p>Verizon optional (extra cost)</p>	<p>Bandwidth requirements (range based on activity of each unit)</p> <p>-SCOT: 1 - 5mpbs</p> <p>-Wally: 300k - 1.5mpbs</p> <p>Data Retention (summary - additional details available upon request):</p> <p>-Full frame/high quality video: Approximately 15 days onboard SCOT/Wally</p> <p>-Detection events: 1 year</p> <p>-User activity: 1 year</p> <p>-Setup details: Until deleted/modified</p>
<p>Optional (no cost) - client Wifi</p> <p>IT Requirements as follows:</p> <p>-Inbound TCP connection: No ports need to be opened</p> <p>-Outbound TCP Connections: 80, 443, 4445, 5938, 8822-8825</p> <p>If UDP: 5938</p>	<p>RAD software supports GDPR erasure requirements.</p>



Available From

PROTECTIVE SERVICES

323-527-9994

www.servexousa.com



Details subject to change without notice.
WallyHSO is a trademark of
ROBOTIC ASSISTANCE DEVICES, INC ©2021

RADWALLYHSO